

# Baking trays Backbleche



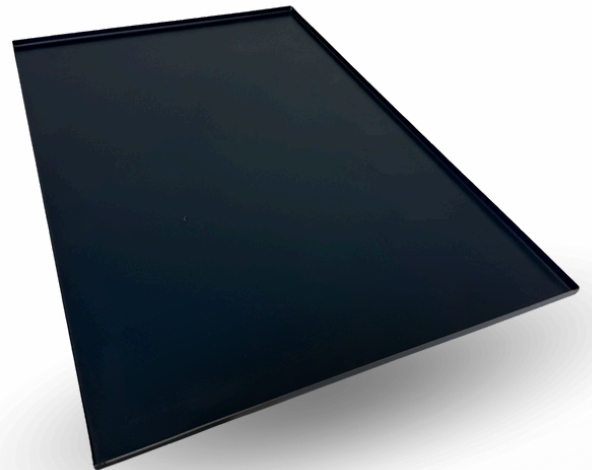
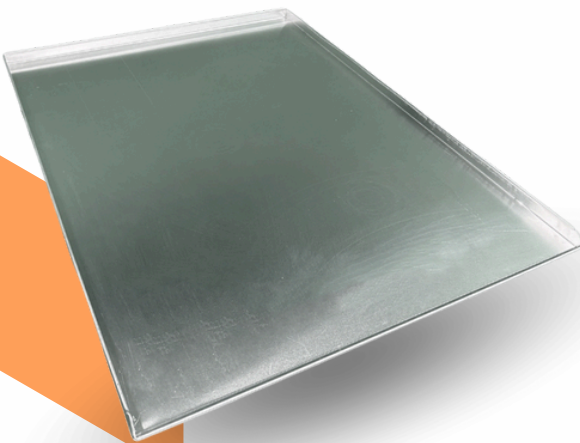
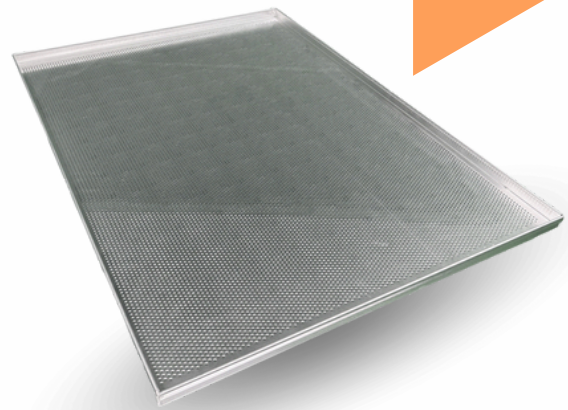
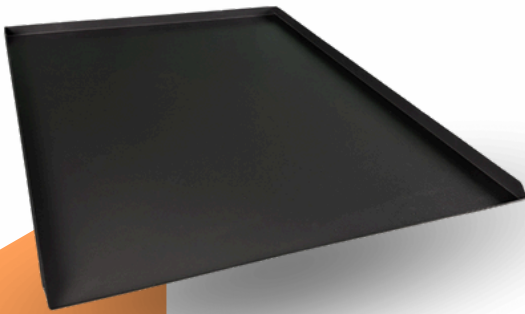
## Offer

- Aluminium trays
- Aluminium teflon trays
- Alusteel trays
- Blue steel trays



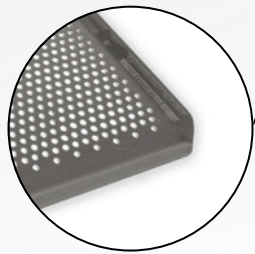
## Angebot

- Aluminium Bleche
- Aluminium teflonbeschichtete Bleche
- Alustahl Bleche
- Blaue stahlbleche

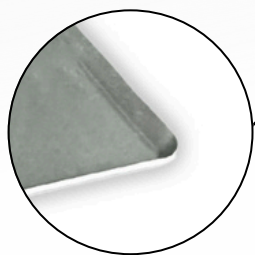


# Baking trays

## Backbleche



4 edges 45° – Open corners 1,5 mm  
4 Kanten 45° – Offene Ecken 1,5 mm



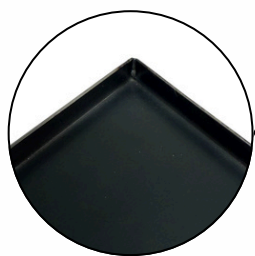
Stamped 45° / 1,5 mm  
Gestanzt 45° / 1,5 mm



3 straight edges 23 mm / 1 edge 45°  
3 gerade Kanten 23 mm / 1 Kante 45°

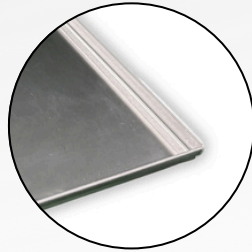


3 straight edges 20 mm / 1 edge 45°  
3 gerade Kanten 20 mm / 1 Kante 45°



4 straight edges 10 mm  
4 gerade Kanten 10 mm

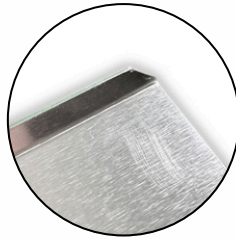
# Baking trays Backbleche



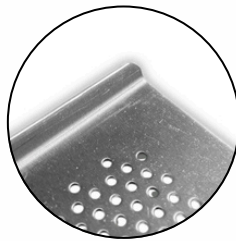
4 straight edges 20 mm  
4 gerade Kanten 20 mm



4 straight edges 23 mm  
4 gerade Kanten 23 mm



2 edges 10 mm 45° / 2 mm opening 60  
2 Kanten 10 mm 45° / 2 mm Öffnung 60



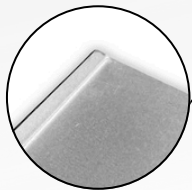
2 edges 10 mm 45° / 1,5 mm opening 40  
2 Kanten 10 mm 45° / 1,5 mm Öffnung 40



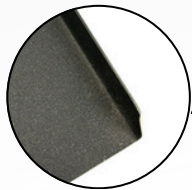
4 open corners 45° / 1,2 mm thick  
4 offene Ecken 45° / 1,2 mm dick

# Baking trays Backbleche

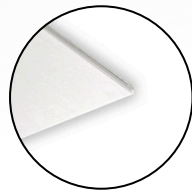
## Alusteel trays Alustahl Bleche



40\*60 Thickness 1,5 mm  
40\*60 Dicke 1,5 mm



60\*40 Thickness 1,5mm  
60\*40 Dicke 1,5mm



60\*80 Thickness 1,5 mm  
60\*80 Dicke 1,5 mm

## General info Allgemeine Informationen

### Dimensions

- 30\*40 cm
- 32,5\*53 cm gastro 1/1
- 53\*65 cm gastro 2/1
- 40\*60 cm
- 40\*80 cm
- 60\*40 cm
- 60\*80 cm
- 60\*100 cm
- 40\*80 cm
- 60\*60 cm

### Blue steel trays

- 40\*60 cm
- 40\*30 cm
- 32,5\*53 cm
- 49,5\*35 cm (Proofchef)

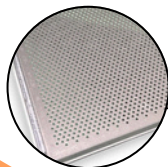
### Abmessungen

- 30\*40 cm
- 32,5\*53 cm gastro 1/1
- 53\*65 cm gastro 2/1
- 40\*60 cm
- 40\*80 cm
- 60\*40 cm
- 60\*80 cm
- 60\*100 cm
- 40\*80 cm
- 60\*60 cm

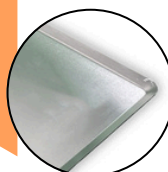
### Blaue Stahlbleche

- 40\*60 cm
- 40\*30 cm
- 32,5\*53 cm
- 49,5\*35 cm (Proofchef)

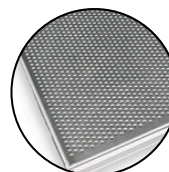
## Type



Microperfo



Solid/Glatt



Perfo