

Bakplaten

Plaques de cuisson



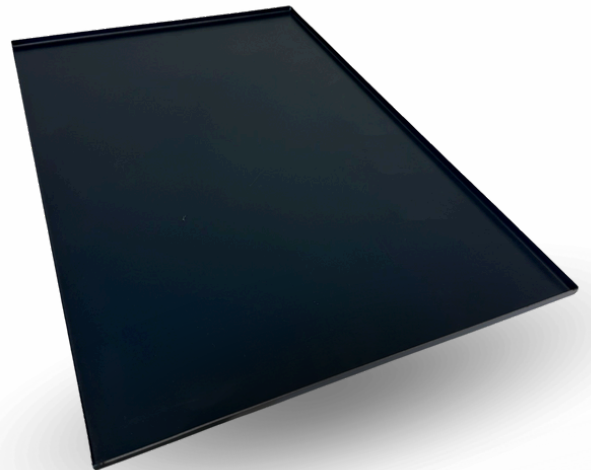
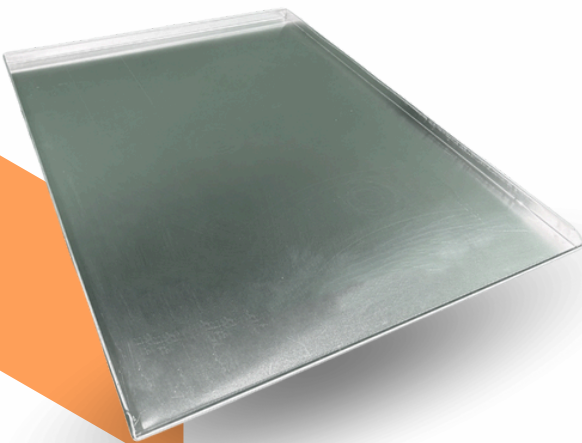
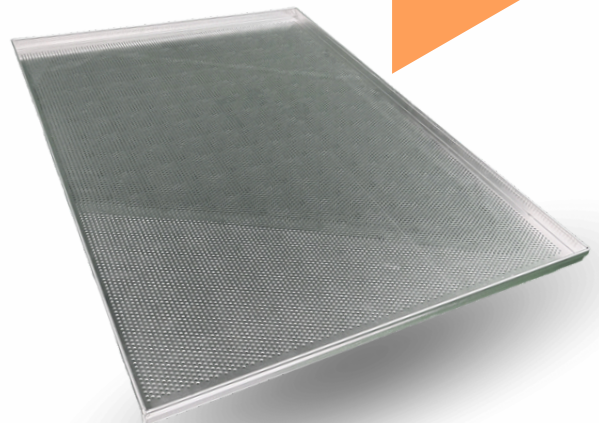
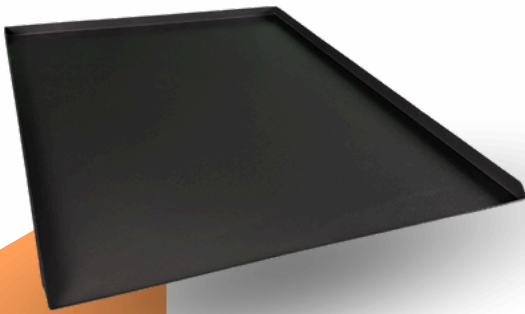
Aanbod

- Aluminium Platen
- Aluminium getefloneerde platen
- Alusteel platen
- Blauwstaal platen



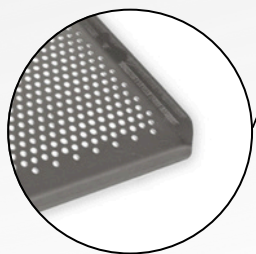
Offre

- Plaques aluminium
- Plaques aluminium téflonnées
- Plaques alusteel
- Tôles en acier bleu

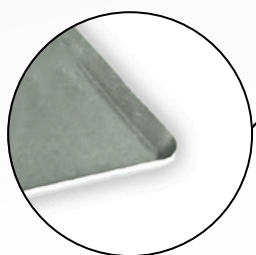


Bakplaten

Plaques de cuisson



4 boorden 45° open hoeken 1,5 mm
4 bords 45° - Coins ouverts 1,5 mm



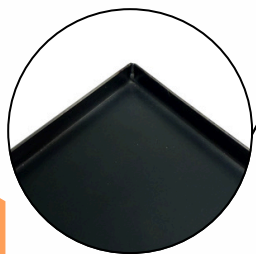
Gestanst 45° / 1,5 mm
Embouties 45° / 1,5 mm



3 rechte boorden 23 mm / 1 boord 45°
3 bords droits 23 mm / 1 bord 45°



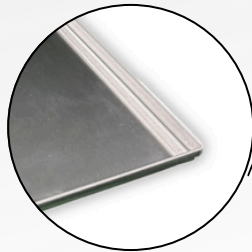
3 rechte boorden 20 mm / 1 boord 45°
3 bords droits 20 mm / 1 bord 45°



4 rechte boorden 10 mm
4 bords droits 10 mm

Bakplaten

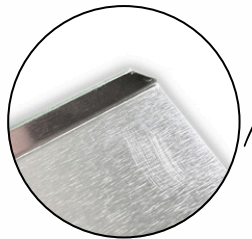
Plaques de cuisson



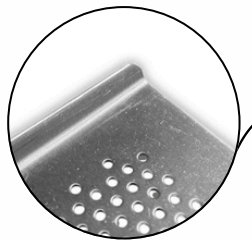
4 rechte boorden 20 mm
4 bords droits 20 mm



4 rechte boorden 23 mm
4 bords droits 23 mm



2 boorden 10 mm 45° / 2 mm opening 60
2 bords 10 mm 45° / 2 mm ouverture 60



2 boorden 10 mm 45° / 1,5 mm opening 40
2 bords 10 mm 45° / 1,5 mm ouverture 40

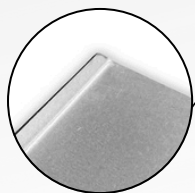


4 open hoeken 45° / 1,2 mm dik
4 coins ouverts 45° / épaisseur 1,2 mm

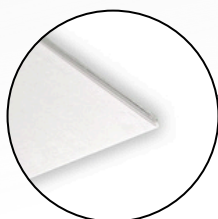
Bakplaten

Plaques de cuisson

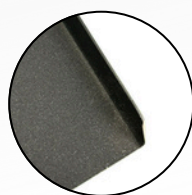
Alusteel platen Plaques alusteel



40*60 Plaatdikte 1,5 mm
40*60 épaisseur 1,5 mm



60*80 Plaatdikte 1,5 mm
60*80 épaisseur 1,5 mm



60*40 Plaatdikte 1,5mm
60*40 épaisseur 1,5 mm

Algemene info Informations générales

Afmetingen

- 30*40 cm
- 32,5*53 cm gastro 1/1
- 53*65 cm gastro 2/1
- 40*60 cm
- 40*80 cm
- 60*40 cm
- 60*80 cm
- 60*100 cm
- 40*80 cm
- 60*60 cm

Blauwstaal platen

- 40*60 cm
- 40*30 cm
- 32,5*53 cm
- 49,5*35 cm (Proofchef)

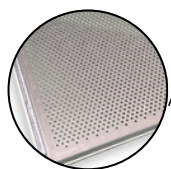
Dimensions

- 30*40 cm
- 32,5*53 cm gastro 1/1
- 53*65 cm gastro 2/1
- 40*60 cm
- 40*80 cm
- 60*40 cm
- 60*80 cm
- 60*100 cm
- 40*80 cm
- 60*60 cm

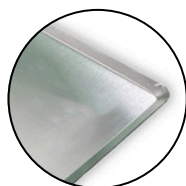
Tôles en acier bleu

- 40*60 cm
- 40*30 cm
- 32,5*53 cm
- 49,5*35 cm (Proofchef)

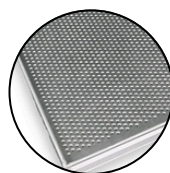
Type



Microperfo



Effen/plein



Perfo